

FOREST RESOURCES FOR IBERIAN EMPIRES ECOLOGY AND GLOBALIZATION IN THE AGE OF DISCOVERY (16TH - 18TH CENTURIES)

ForSEAdiscovery

<http://forseadiscovery.cchs.csic.es/>

Ana Crespo-Solana¹, Ignacio García-González², Ute Sass-Klaassen³, Nigel Nayling⁵, Marta Domínguez-Delmás², Tomasz Wazny⁴, Aoife Daly⁶

¹ Instituto de Historia, Consejo Superior de Investigaciones Científicas, Madrid, Spain

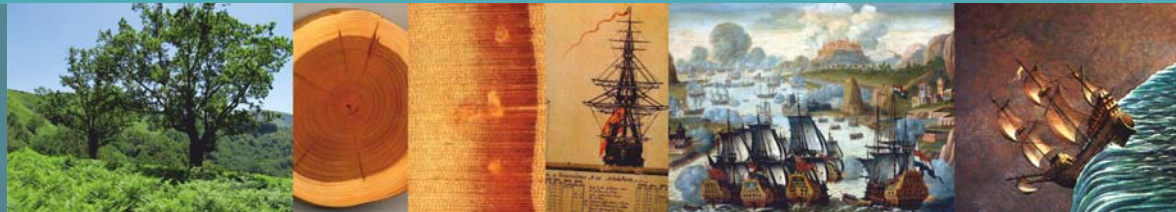
² Department of Botany, University of Santiago de Compostela, Lugo, Spain

³ Forest ecology and management, Wageningen University, Wageningen, The Netherlands

⁴ Institute for the Study, Conservation and Restoration of Cultural Heritage, Nicolaus Copernicus University, Torun, Poland and University of Arizona, Laboratory of Tree-Ring Research, Tucson, USA

⁵ School of Archaeology History and Anthropology, University of Wales Trinity Saint David, Lampeter, United Kingdom

⁶ DendroDK, Statens Museum for Kunst, Denmark



RESEARCH QUESTIONS

Could iberian forest resources supply timber for ships of the Age of Discovery and european expansion?

Was there timber shortage and import from the North and East of Europe?

How were the trade networks organised?

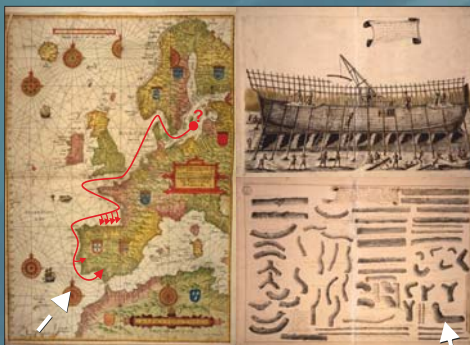
Were the technological changes in shipbuilding in the 16th to 18th a result of timber shortage or the result of exchange between mediterranean and atlantic shipbuilding traditions?

Wp2

NAUTICAL ARCHAEOLOGY AND SHIPBUILDING

What - Collecting information on construction features of 16th to 18th century iberian shipwrecks.

How - Comparative study of information from literature, historical archives and archaeological evidence about shipbuilding techniques.



© Miguel San Claudio Archaonauta

© Museo Naval

Wp3

WOOD PROVENANCING

What - Combination of tree-ring research, wood anatomy and geo/dendrochemistry to develop an integrated reference dataset to identify and provenance iberian oak and pine.

How - Construction of long oak and pine tree-ring chronologies from living trees, historical buildings and archaeological sites for different areas of Atlantic Iberia. Assessment of local environmental and site conditions, including geochemical composition of soils and forest management on tree-ring variables, wood anatomy and wood chemistry of oak and pine wood for high-precision dendroprovenancing".

Wp1

HISTORICAL WOOD SUPPLY AND DYNAMIC TRADE NETWORKS

What - Historical analyses of the relationships between deforestation processes and the use of resources for shipbuilding in Iberian Empires.

How - Analysis of technologies and literature in shipbuilding, raw material, timber trade and merchant networks in the First Global Age (16th-18th centuries). Historical GIS and Databases on shipping and timber trade



© Erwan Aricau/AVENA

© Filipe Castro, TAMU



This project has received funding from the European Union's Seventh Framework Programme for research, technological development and demonstration under grant agreement no. PITN-GA-2013-607545

ITN-coordinator: Dr. Ana Crespo Solana (Instituto de Historia, Consejo Superior de Investigaciones Científicas, CSIC)

e-mail: ana.crespo@cchs.csic.es

forseadiscovery@cchs.csic.es



PARTNERS INSTITUTIONS



ARCHEONAUTA S.L.

WAGeningen

dendro.dk